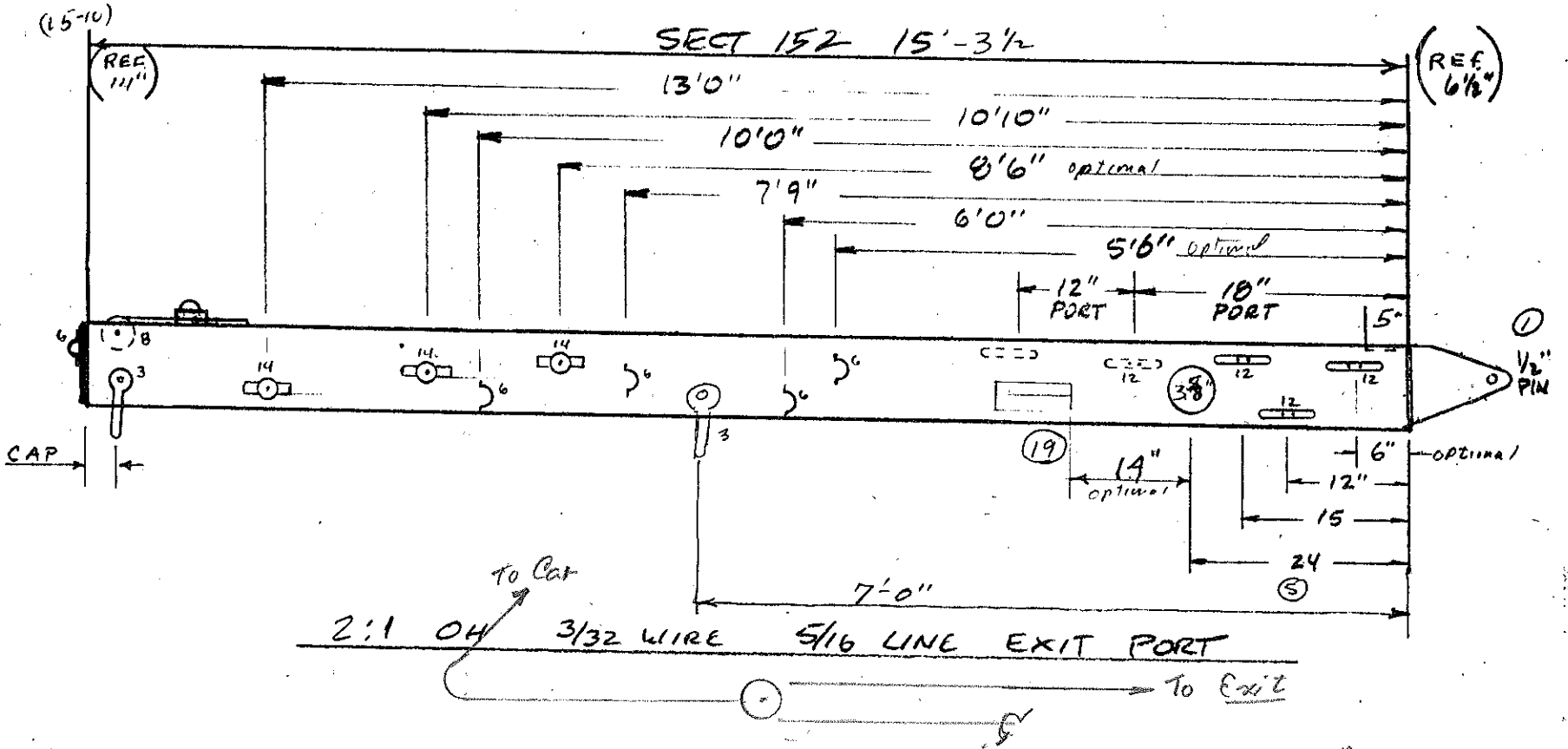


JOB NUMBER	REVISION	DWGS-	BRISTOL CHANNEL CUTTER	FORES Mfg. Corp	DRAWN BY	CHECKED BY	DATE
	>HULL 100		#116	327016	SC		3-8-94

REV. 7/19/95 CHANGE TO 1 1/4 TRACK AND 847200 CAR  
 E- 14'8" Traveler - 15'7" Finish- \_\_\_\_\_

REV 3-18-99 Length Beam 3" TO 15'3 1/2"  
 Extend OH TAP TO 21"  
 REV 9-15-00  
 ADD BALS AT 7'-0"



1	G.N. End (2)	843010	2	O.H. End (1)	3/16 ALUM	3	Bales 2	853070	4	O.H. Cap (1)	847200
5	WINCH PAD (1)	832300	6	Med. Eye (4)	855010	7	Bale		8	O.H. SHV (1)	855365
9	TRACK STOP (1)	339002	10		( )	11	O.H. Block 1	855061	12	CLEAT (9)	834010
13		( )	14	Reef Sheave (3)	855220	15	O.H. Shackle (1)	848271	16	3/32 WIRE (12)	080038
17	SECTION 152 (16)	873400	18	1 1/4 TTRACK (21")	339003	19	Spindlock DB clutch	XA-2	20	5/16 LINE (20)	080080